

Ashtons

204 Rowntree Avenue YO30 6HF

£1,250 Per Month

3



1



1



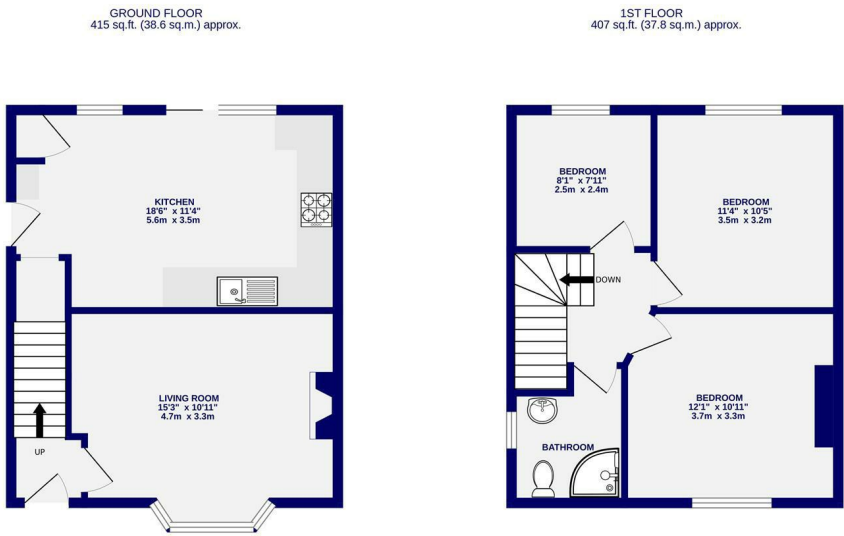
D





A well-proportioned three bedroom end-terrace property offering gardens to the front and the rear in addition to the benefit of off street parking. Located to the north of the city the property with good links to the city centre and within walking distance to Nestle and York Hospital. Offered on an unfurnished basis and comprising entrance hall, living room to the front. Dining / kitchen with appliances to include cooker and plumbing for washing machine. The first floor houses two double bedrooms, a good size third bedroom and three piece shower room. Outside the house is a lawned rear garden with a large wooden shed with power. Available Now

Deposit £1350 / 12 Month Tenancy / EPC D / Council Tax Band B



TOTAL FLOOR AREA: 822 sq.ft. (76.4 sq.m.) approx.

Whilst every attempt has been made to ensure the accuracy of the floorplan, measurements of rooms and any other items are approximate. It is included in the plan the garageneries will form part of the overall floor area and no responsibility is taken for any error, omission or mis-statement. This plan is for illustrative purposes only and should be used as such by any prospective purchaser. The services, systems and appliances shown have not been tested and no guarantee as to their operability.

Made with Metropix (2025)

Ashtons Lettings

01904 731404

lettings@ashtonsnet.com

